

PATHOGEN & SPOILER MAPPING

Advanced capabilities to help you understand and mitigate contaminations

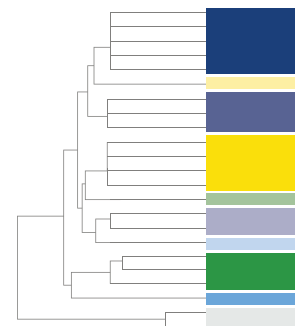


Your Trusted Partner in Augmented Diagnostics

With over 60 years of experience, bioMérieux offers a wide range of services to help you understand and mitigate contaminations. Our experts are committed to providing smarter, more dynamic risk assessment to help provide consumers safe products of the highest quality.

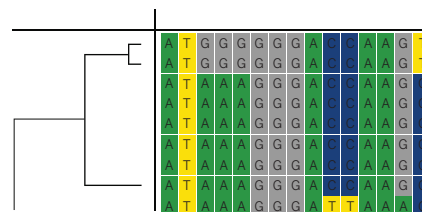
LABORATORY ANALYSIS

- bioMérieux sequencing laboratory located in Philadelphia, PA
- Hardware: Illumina MiSeq® and iSeq®, short read technology
- Whole Genome Sequencing services provided
- Includes confirmation, isolation, purification, library prep, QC and sequencing



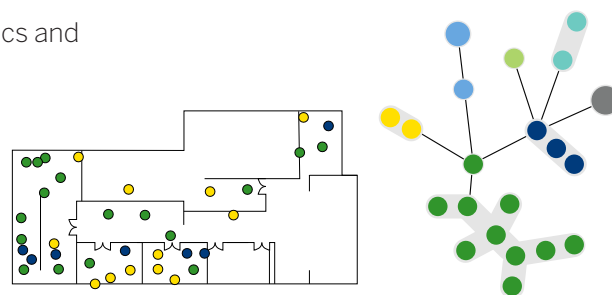
STANDARD BIOINFORMATICS

- Includes data assembly and analytics, as well as custom report.
- Software used: BIONUMERICs®. Platform owned by bioMérieux, and used by both CDC and USDA.
- Analysis included: SNP, MLST, Clustering, Map to reference, De Novo assembly, etc.
- Additional options, included but on-request only: data loading and comparison to public database, building and maintenance of private and secure WGS library.



PATHOGEN & SPOILER MAPPING

- Advanced bioinformatics is a combination of advanced analytics and expertise to support root cause analysis.
- Geographical and resistance mapping of strains, to understand how and where they spread, why they are persistent and how to mitigate them.
- Custom report, with opportunity to display on facility map using ENVIROMAP® software (now offered by bioMérieux).*



*For ENVIROMAP® users only

PRICING AND TURNAROUND TIME

SERVICE	PRICING	TURNAROUND TIME
Standard (laboratory + standard bioinformatics)	Consult us	3 weeks**
Pathogen & Spoiler Mapping	Consult us	+ 10 business days after standard analysis

**Pricing all-inclusive except strain shipping to our lab